

Behavioral Health Services Act Community Planning Proposal

MHSA Steering Committee Presentation May 15, 2025

Andrea Crook
Health Program Manager

Jane Ann Zakhary
Division Manager



DEPARTMENT OF HEALTH SERVICES

Behavioral Health Services

Agenda

1

BHSA Overview

2

BHSA Community Planning

3

Next Steps

BHSA Overview

The Behavioral Health Services Act replaces the Mental Health Services Act of 2004. It reforms behavioral health care funding to prioritize services for people with the most significant mental health needs while adding the treatment of substance use disorders (SUD), expanding housing interventions, and increasing the behavioral health workforce. It also enhances oversight, transparency, and accountability at the state and local levels.

Funding Allocations

Pre-Prop 1: MHSA

76% for Community
Services & Supports

19% For Prevention & Early
Intervention

5% for Innovation

Post-Prop 1: BHSA

35% for Full Service
Partnership

35% for Behavioral Health
Services & Supports

30% for Housing Interventions

BHSA Components

Full-Service Partnership Services

Comprehensive and intensive care for people at any age with the most complex needs (also known as the, “whatever it takes” model).

Behavioral Health Services and Supports

Includes early intervention, outreach and engagement, workforce, education and training, capital facilities and technological needs, and innovative pilots and projects.

Housing Interventions

Interventions include rental subsidies, operating subsidies, shared housing, family housing for eligible children and youth, and the non-federal share of certain transitional rent.

MHSA Plans vs BHSA Integrated Plan

MHSA

- The Three-Year Program and Expenditure Plan focused on MHSA funding only (Prospective and Arrears)
- Goal was to collect and report on local county MHSA data, promote stakeholder engagement and improve local outcomes
- Plans were developed every three years
- Required stakeholder engagement
- Last MHSA annual update is due to DHCS by June 30, 2025

BHSA

- A Prospective plan and budget for all County Behavioral Health services.
- Goal is to standardize data collection and reporting, promote stakeholder engagement and improve local outcomes
- Integrated Plans are developed every three years
- Requires engagement from an expanded list of stakeholders
- Draft Integrated Plan due to DHCS by March 31, 2026
- First BHSA Integrated Plan is due to DHCS by June 30, 2026.

BHSA Stakeholder Involvement

Overview

- BHSA transforms the MHSA planning process into a broader county and regional planning process
- Counties must engage with local stakeholders to develop each element of their Integrated Plan



Stakeholder Groups

that must be engaged...

Health and Behavioral Health Providers

- Providers of mental health services and substance use disorder treatment services
- Health care organizations, including hospitals
- Health care service plans, including Medi-Cal Managed Care Plans (MCPs)
- Disability insurers (a commercial disability insurer that covers hospital, medical or surgical benefits as defined in Insurance Code section 106, subdivision (b))
- Emergency medical services
- Tribal and Indian Health Program designees established for Medi-Cal Tribal consultation purposes

Individuals and Families with Lived Experience

- Eligible adults and older adults (individuals with lived experience)
- Families of eligible children and youth, eligible adults, and eligible older adults (families with lived experience)
- Youths (individuals with lived experience) or youth mental health or substance use disorder organizations

Education, Civic, and Public Systems

- Local education agencies
- Higher education partners
- Early childhood organizations
- Public safety partners, including county juvenile justice agencies
- The five most populous cities in counties with a population greater than 200,000
- Labor representative organizations
- Veterans
- Representatives from veterans' organizations
- Local public health jurisdictions

Social and Community Services

- County social services and child welfare agencies
- Continuums of care, including representatives from the homeless service provider community
- Regional centers
- Area agencies on aging
- Independent living centers
- Community-based organizations serving culturally and linguistically diverse constituents

Diverse Viewpoints

that must be included...

- Representatives from organizations specializing in working with underserved racially and ethnically diverse communities
- Representatives from LGBTQ+ communities
- Victims of domestic violence and sexual abuse
- People with lived experience of homelessness



Types of Engagement

can include...

Collaborative Engagement Activities

- Listening sessions
- Conference calls
- Consumer and family group meetings
- Town hall meetings
- Client advisory meetings
- Video conferences
- Stakeholder workgroups and committees
- Focus groups
- Key informant interviews or engaging with subject matter experts

Public Feedback Mechanisms

- Surveys
- Public comment
- Public hearings

Education and Capacity Building

- Media announcements
- Targeted Outreach
- Other strategies that demonstrate meaningful partnerships with stakeholders

Outreach and Communication Strategies

- Education and engagement to support meaningful involvement, including on policies that govern the behavioral health delivery system
- Training, education, and outreach related to community planning



Examples of Engagement Activities



*Still required under BHSA

BHSA Community Planning

To Develop First BHSA Integrated Plan

BHSA Planning

- Engagement with a broad range of required stakeholders
- Expanded strategies to ensure inclusive and meaningful input
- Can be achieved with the use of existing platforms and creation of new opportunities for feedback
- Focus on informing key transitions and planning efforts



BHSA Ad Hoc Work Group



New Ad Hoc Work Group

- Comprised of some of the required stakeholders
- Goals/Objectives:
 - Gather input on transition from MHSA to BHSA
 - Gather input on development of first BHSA Integrated Three-Year Plan

BHSA Ad Hoc Work Group



Work Group Details

- Convene Ad Hoc Work Group through submission of Draft Integrated Plan
- Meetings would be open to public
- MHSA Steering Committee members will be invited to apply/join

Focus Groups, Surveys, and System Partner Input



- Gather input from remaining required stakeholders by holding focus groups and input sessions at existing meetings/committees
- Issue surveys to gather additional input
- Goals /Objectives:
 - Gather input on transition from MHSA to BHSA
 - Gather input on development of first BHSA Integrated Plan

Transition Pathway

May MHSA Steering Committee Meeting

Goals/Objectives:

- Provide BHSA community planning overview
- Highlight CPP requirements under BHSA
- Share proposed BHSA community planning design



MHSA Community Planning Structure

- Has played a key role in MHSA's success over the years
- Current structure is not conducive to engagement with the required 24 stakeholder groups
- Need to adapt the structure to ensure inclusion of all required BHSA stakeholders for comprehensive input
- Improved engagement will lead to more informed decision-making and better outcomes across the system

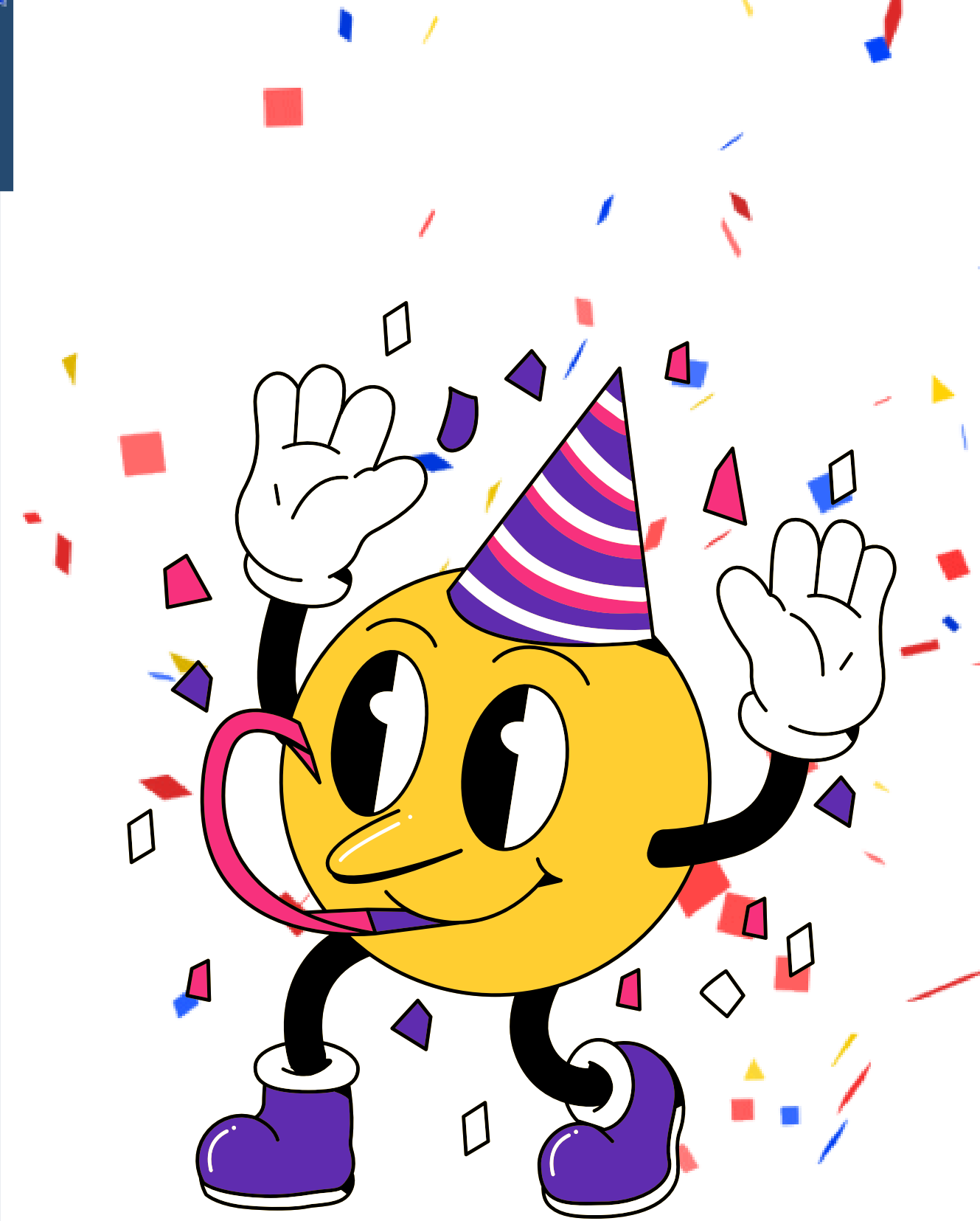


MHSA Steering Committee

- MHSA SC has been core and integral to the successful implementation of MHSA in Sacramento County over the past 20 years
- With input and support from the MHSA Steering Committee, we have over 80 MHSA funded programs and activities

In June...

**LET'S
CELEBRATE**



MHSA Celebration

On June 26, we will proudly conclude MHSA community planning, taking the time to celebrate and deeply honor the invaluable contributions of our stakeholders. With heartfelt gratitude, we recognize the collective achievements and dedicated efforts that have shaped our journey.

We hope you will join us!



THANK
YOU

Questions?



DEPARTMENT OF HEALTH SERVICES

Behavioral Health Services