



**METHAMPHETAMINE  
COALITION  
FEBRUARY 13, 2020**

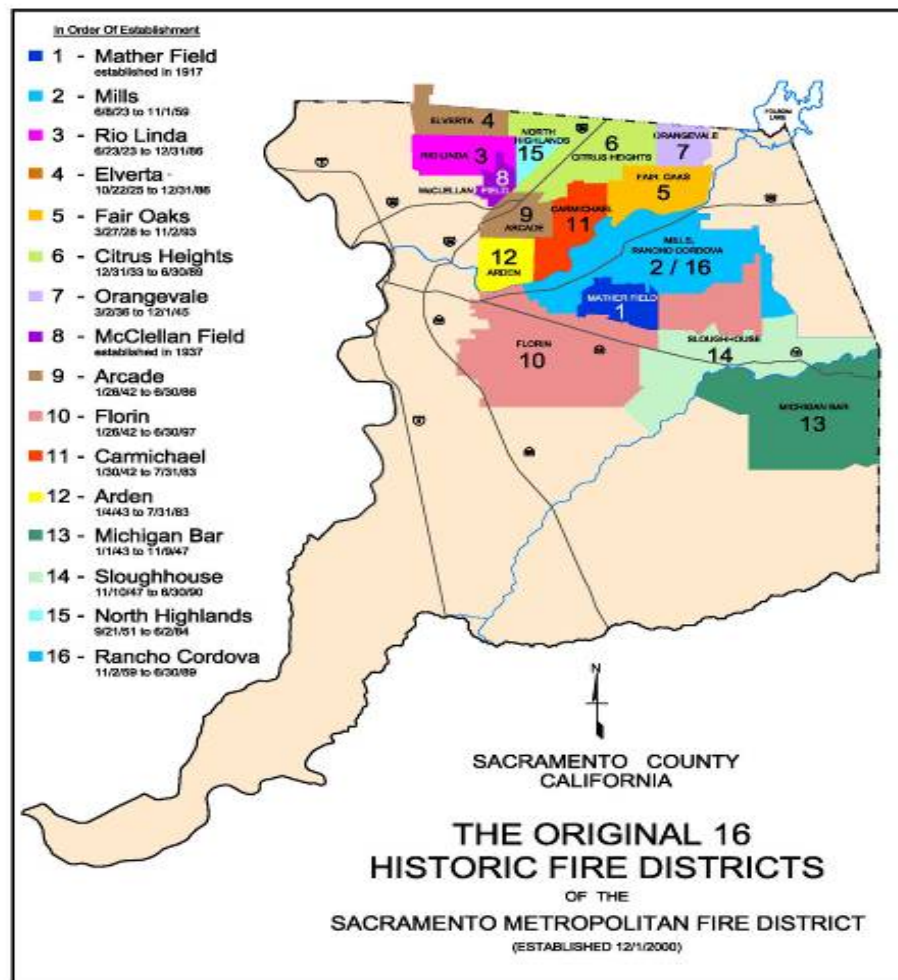
Scott Perryman  
Captain/Paramedic/PA-C



# Metro Fire

- ❖ Serving over 738,000
- ❖ 358 square-mile service area
- ❖ 669 Metro Fire Employees
- ❖ 41 fire stations
- ❖ Over 96,000 calls in 2019
  - 70% of calls are medical aid.

**7<sup>th</sup> Largest Fire Agency  
in the State of California**





# Case 1







## Case 2







## Case 3





## Case 4





# Overall

- ❖ The cases presented today are on the extreme side
- ❖ There is a common theme to all the stories
  - 911 call
  - Fire/EMS
  - Law Enforcement
  - Hospital





# Final Points

## FIRE/EMS ISSUES

- Increased call volume
- Increased risk
  - Unpredictable patient
  - Increased exposure to biohazards
  - Increased potential for litigation
- Increased possibilities of Workers Comp cases
- Increased resources for incidents
- Increased time on incidents
- Low/no cost recovery
- Difficulties with accurate data



# QUESTIONS?

Scott Perryman  
*Captain/Paramedic/PA-C*  
Perryman.Scott@metrofire.ca.gov  
916-747-5938