



# Homeless and Housing Services

Department of Homeless Services and Housing

# Context: Homelessness & Housing



## Housing Insecure

- *Doubled Up*
- *Couch Surfing*
- *Institutional Settings*



## Unsheltered

- *Encampments*
- *Vehicles*
- *Unfit for Habitation*



## Sheltered

- *Emergency Shelter*
- *Safe Stay*
- *Transitional Housing*
- *Interim Shelter/Housing*



## Affordable Housing

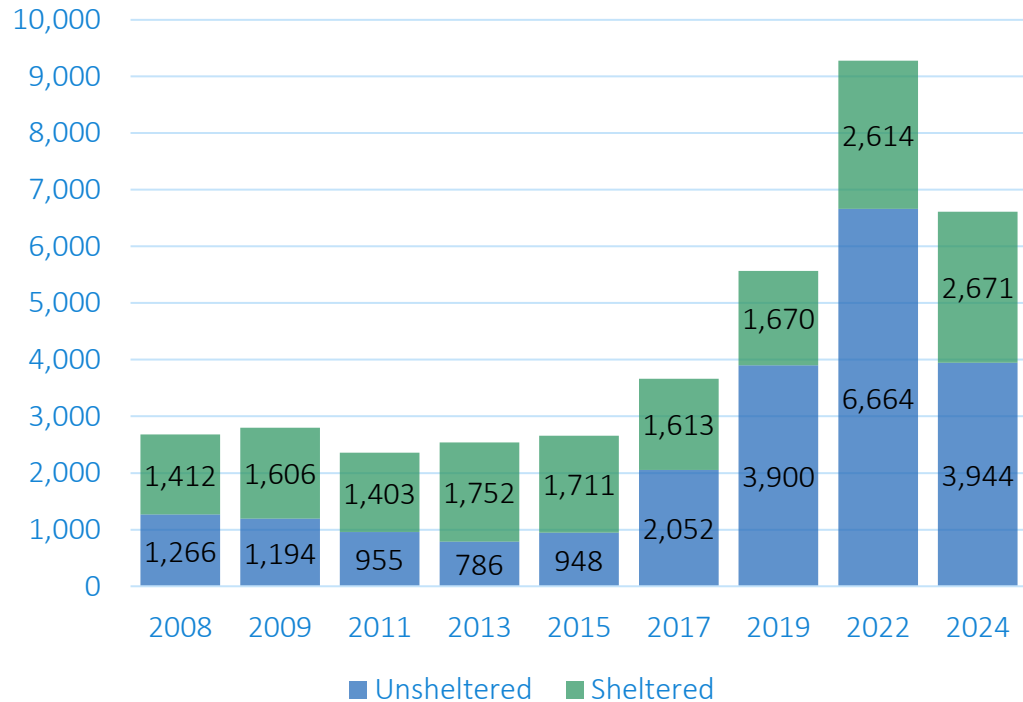
- *Permanent Supportive Hsg*
- *Vouchers/Section 8*
- *Regulated Affordable*
- *Re-Housing Programs*



Federal Definition of Homeless

# Context: Homelessness & Housing

Sacramento Point-in-Time Counts, 2008-2024



*In Sacramento, earning minimum wage of \$16.50 an hour, you would need to work 83 hours each week to afford a one-bedroom rental unit at market rate.*

## From the 2023 CA Study of People Experiencing Homelessness:

People experiencing homelessness in California are Californians:

- ✓ 90% of respondents lost housing in CA
- ✓ 75% lost housing in same County in which they experienced homelessness

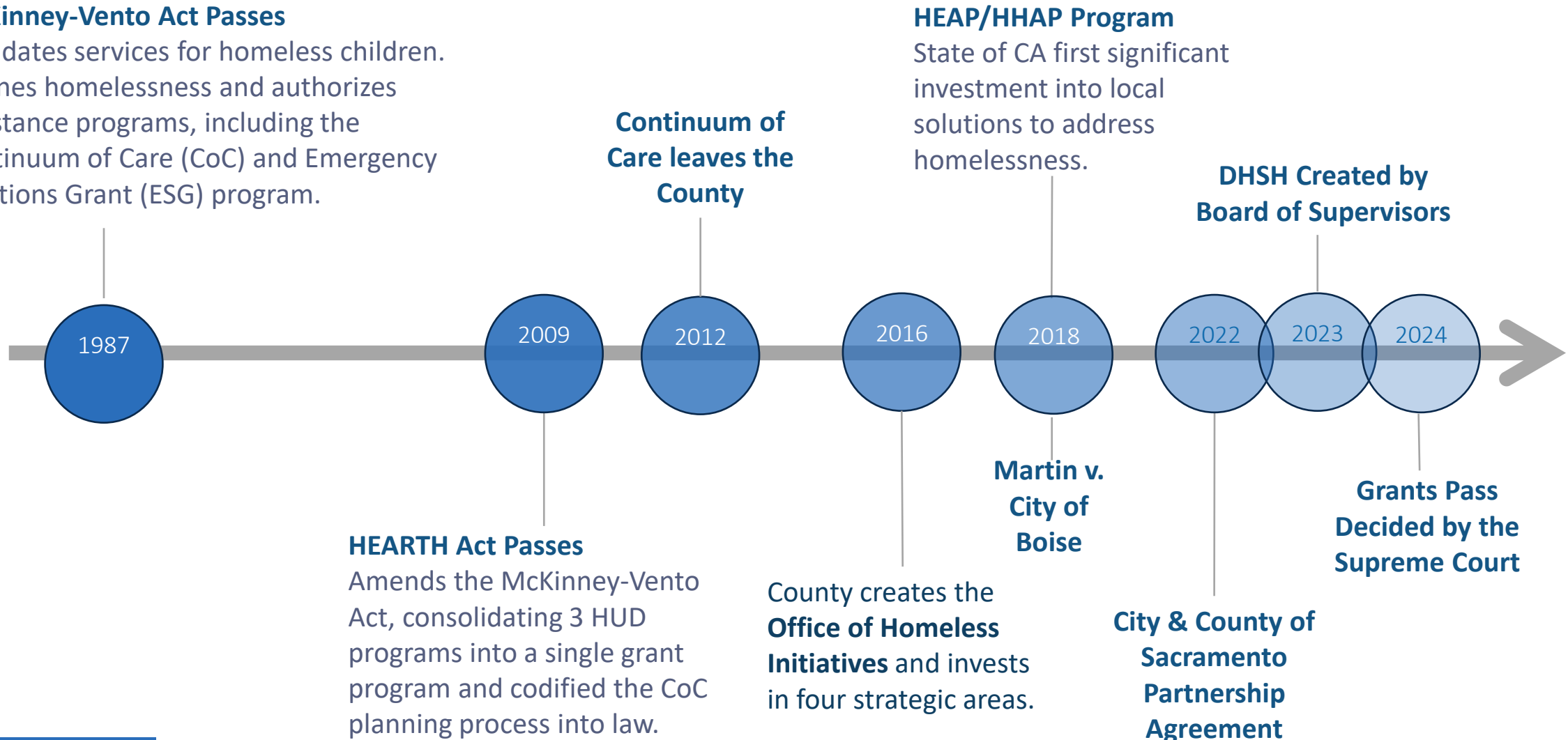
Homelessness is linked to deep poverty.

*The median household income preceding homelessness was \$11,520 annually.  
2023 Federal poverty threshold for a single adult is \$14,580 annually.*

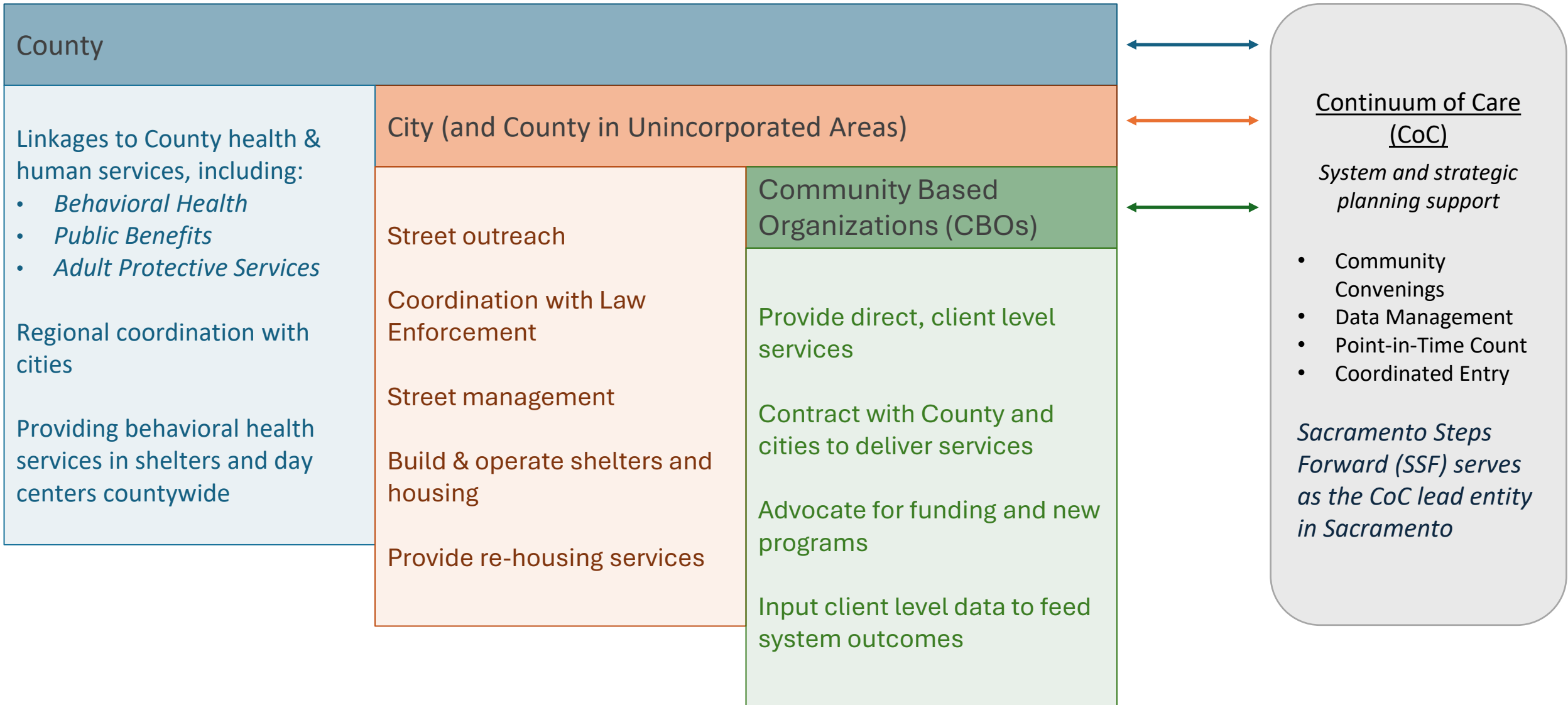
<https://nlihc.org/oor>

<https://homelessness.ucsf.edu/our-impact/studies/california-statewide-study-people-experiencing-homelessness>

# Timeline of Homeless Policies and Directives



# Local Partners



# County Programs: Outreach & Engagement

## Encampment Outreach Teams

- 16 Community Health Workers in unincorporated County
- Multi-disciplinary team deploy via:
  - *Proactive, County identified priority encampments*
  - *Response driven needs with Sheriff, Rangers, others*
  - *Dedicated 'office hour' spaces in suburban areas*
- On-going, housing focused engagement, averaging 40+ service touches

In the last six months of 2025, County outreach teams provided **37,554** services to **916** unduplicated individuals and supported **222** individuals transitioning out of unsheltered homelessness in the unincorporated County



# County Programs: Shelter & Interim Housing

The Sacramento community currently has over 3,000 beds of year-round shelter and transitional housing. The County funds over 1,500 of these beds and has 275 additional in development.



## Safe Stay Communities

- Non-congregate, 'sleeping cabin' shelters
- Low/no barrier to entry
- Housing and service focused
- Address impacts in community
- 427 beds open, 225 in pipeline



## Congregate and Population Specific Shelter

- Programs for families, youth, seniors
- Medical respite, weather, and behavioral health focused beds



# County Programs: Prevention & Re-Housing

## Prevention

- County's Landlord Engagement and Assistance Program (LEAP) has provided \$1.7 million of prevention assistance to keep over 1,000 people in almost 500 households housed
- Sacramento Steps Forward (SSF) reported \$6 million to support over 2,400 households through PSAP prevention efforts since 2021



## Re-Housing

Through DSHS re-housing programs:

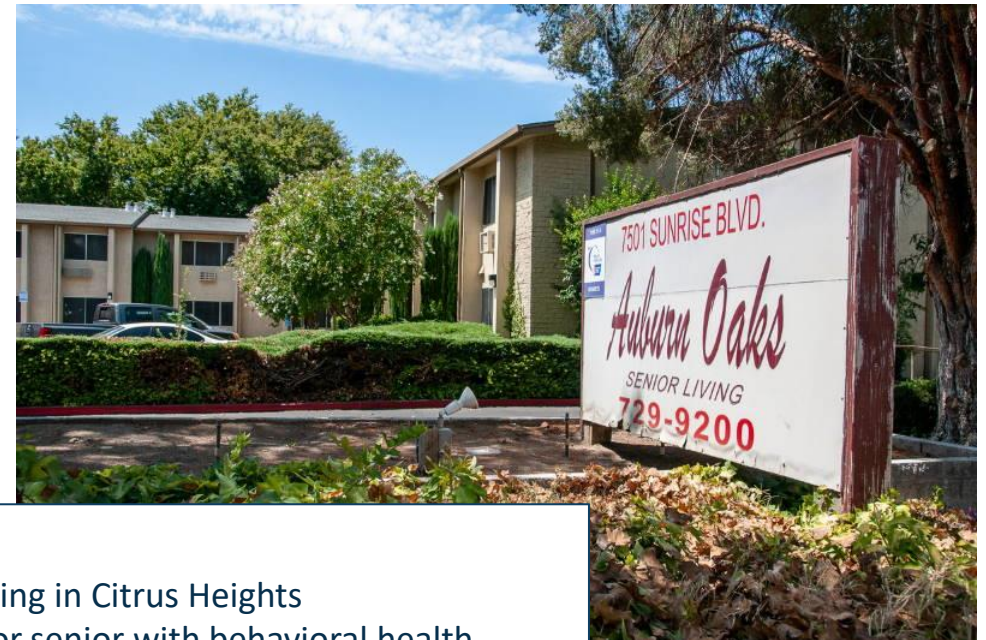
- 166 families housed through Housing for Healthy CA (HHC)
- 219 families housed through LEAP
- 160 people housed from scattered site shelter program

# County Programs: Housing Development

DHSH partners with SHRA and the Department of Health Services on many housing developments, but just recently have begun to directly invest in housing development!

## Residence Inn

- 176 units in unincorporated County
- 32 units will be permanent supportive housing for people existing the Parkway
- Balance of units will be workforce housing
- DHSH supporting acquisition of property and 10 years of rental subsidies

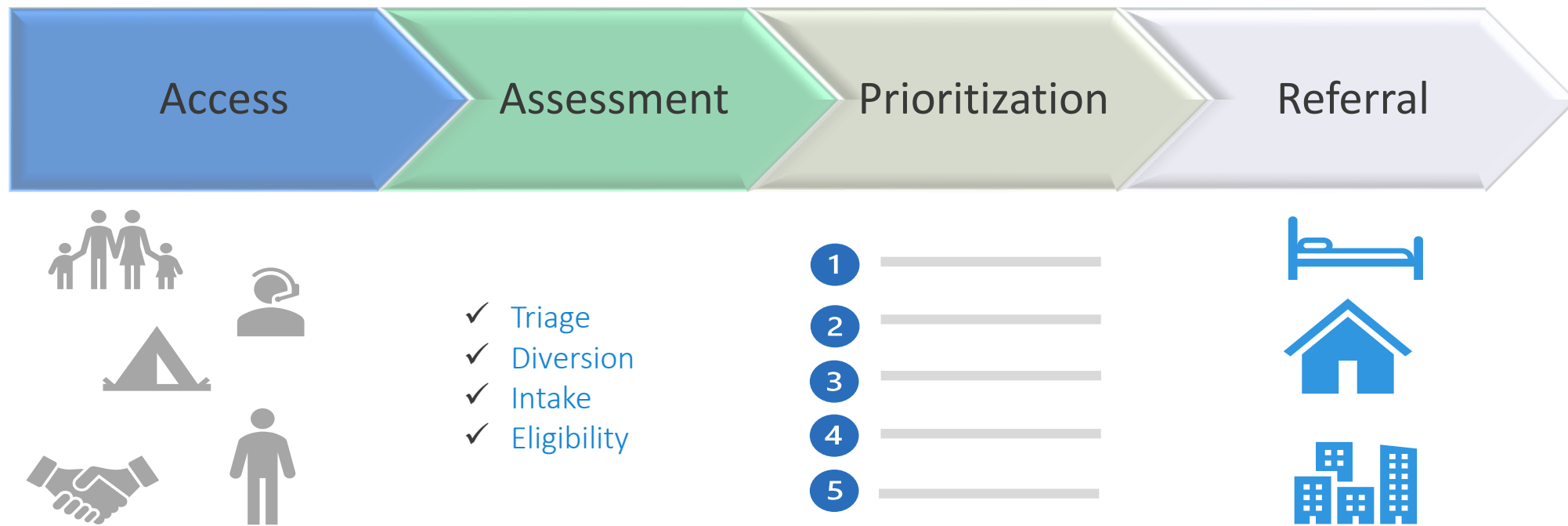


## Auburn Oaks

- 84 unit senior housing in Citrus Heights
- Will include units for senior with behavioral health needs and those referred by Adult Protective Services
- During construction, units will be used as interim bridge shelter for seniors
- DHSH committed \$3 million in Housing for Healthy CA as bridge rental subsidies

# System Implications

**Coordinated Access:** A streamlined system designed to match people experiencing homelessness with housing and service options. This process prioritizes limited local supportive housing resources, so people with the highest vulnerability can be connected to support as quickly as possible.



The Sacramento County Coordinated Access System averages approximately 3,000 single adults and 600 families waiting for shelter placement at any point in time.

# Challenges and Opportunities

## *Opportunities*

- ✓ Development of dedicated homeless departments to work in partnership with behavioral health and social service partners
- ✓ Better integration of health services, service coordination and housing through CalAIM
- ✓ Strong local interest and commitment to increased partnership and collaboration
- ✓ Commitment to better align housing activities in homeless prevention & re-housing efforts

## *Challenges*

- ✓ Limited availability of permanent, affordable housing
- ✓ No mandate → inconsistent funding
- ✓ Strained capacity of community-based organizations
- ✓ Challenge of focusing on long term solutions vs crisis response → community frustration
- ✓ Doubt in “Housing First” approach
- ✓ Threats at federal level



# Questions & Discussion