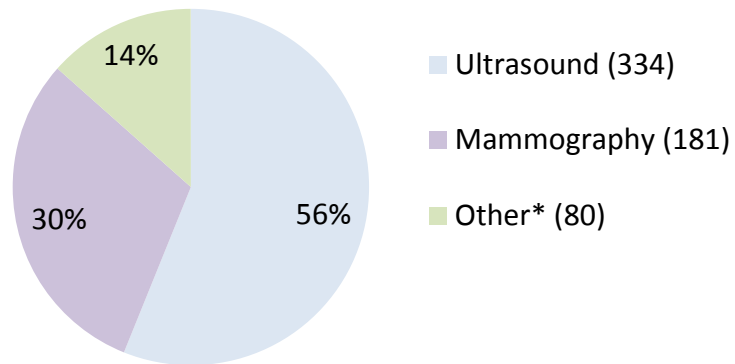


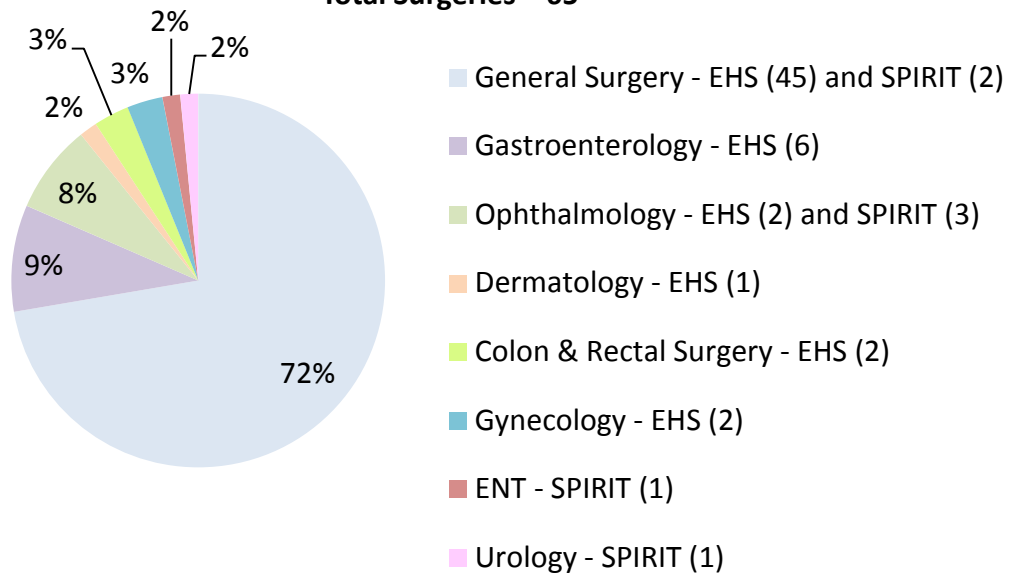
Sacramento County
 DHHS Primary Health Services
Healthy Partners Diagnostic & Specialty Utilization
 Data Period: July 1, 2017 – January 31, 2018
 Report Date: March 5, 2018

EHS Diagnostic Services
Total Services = 595



**Other includes: CT, MRI, Echo, Bone Density, Radiology, and Fluoroscopy.*

Surgeries
Total Surgeries = 65



Outpatient Specialty by Provider

Total Services = 572*

Type	EHS	SPIRIT	UCD
Physical Therapy	186		
Ophthalmology	78	4	
Optometry		73	
Pathology	56		
Dermatology	55		
Colon & Rectal Surgery	32		
Gastroenterology	20		
Rheumatology			18
Gynecology	15	1	
Musculoskeletal			16
Nephrology			6
Occupational Therapy	5		
General Surgery		2	
Pulmonology		2	
Ear, Nose and Throat		1	
Retinal		1	
Urology		1	
Total	447 (78%)	85 (15%)	40 (7%)

*Outpatient Specialty by Provider data for the period of July 1, 2017 – November 30, 2017 incorrectly noted 714 total services due to multiple CPT codes being entered per patient visit. The information has been corrected for this report.

Comparison FY 16/17 and FY 17/18 YTD			
	FY 16/17	FY 17/18 (7/1/17- 1/31/18) 7 month period	Comparison to Last FY: Additional services delivered
Diagnostics	1,606	595	N/A
Surgeries	10	65	55
Specialty	334	572	238
Comments:			
<ul style="list-style-type: none"> • FY 17/18 YTD Surgeries & Specialty services have surpassed FY 16/17. • There are five months remaining in the fiscal year. • Changes in vendor are in process. 			