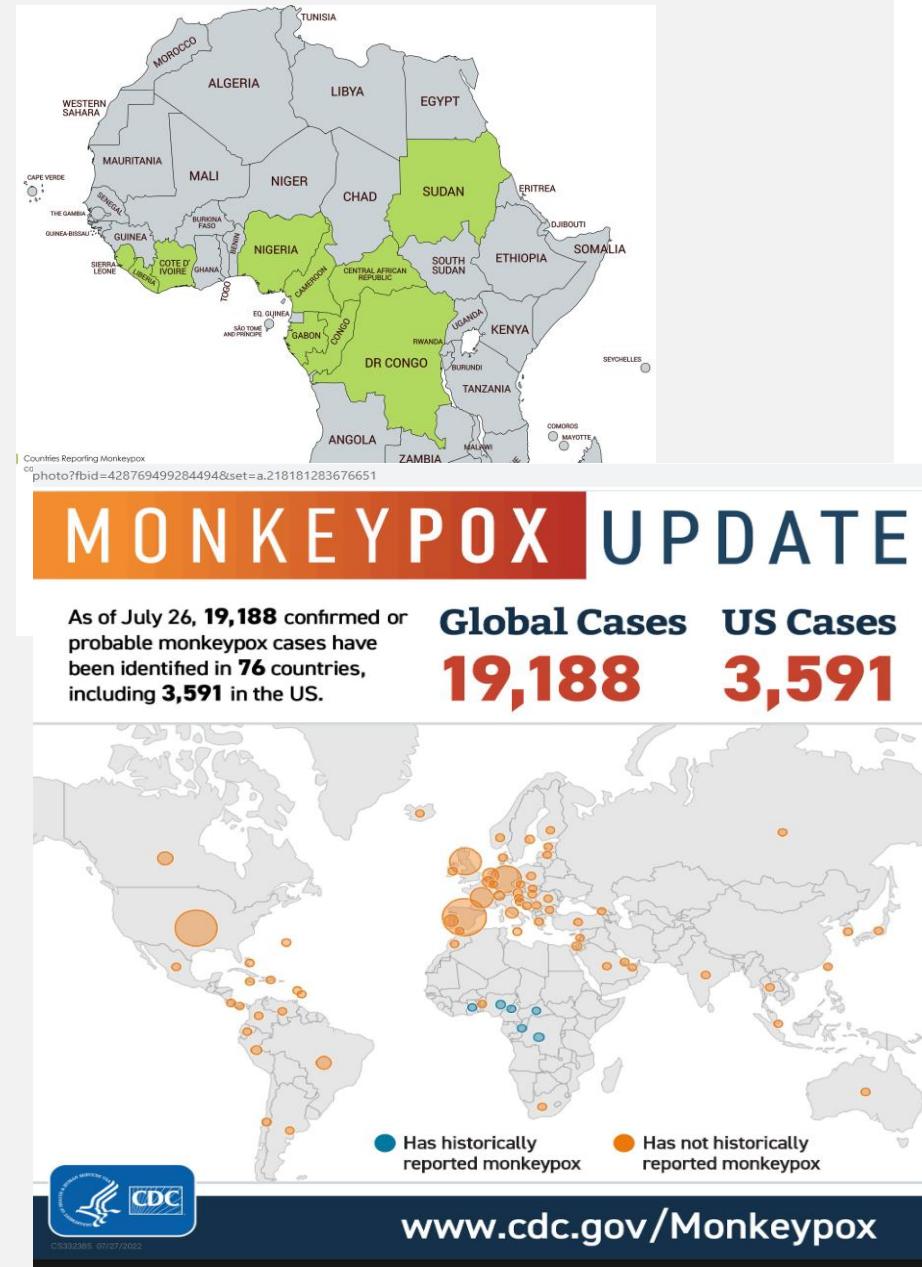


SACRAMENTO'S MONKEYPOX RESPONSE

Lynnan Svensson, MSN, RN, PHN
Division Manager/DON

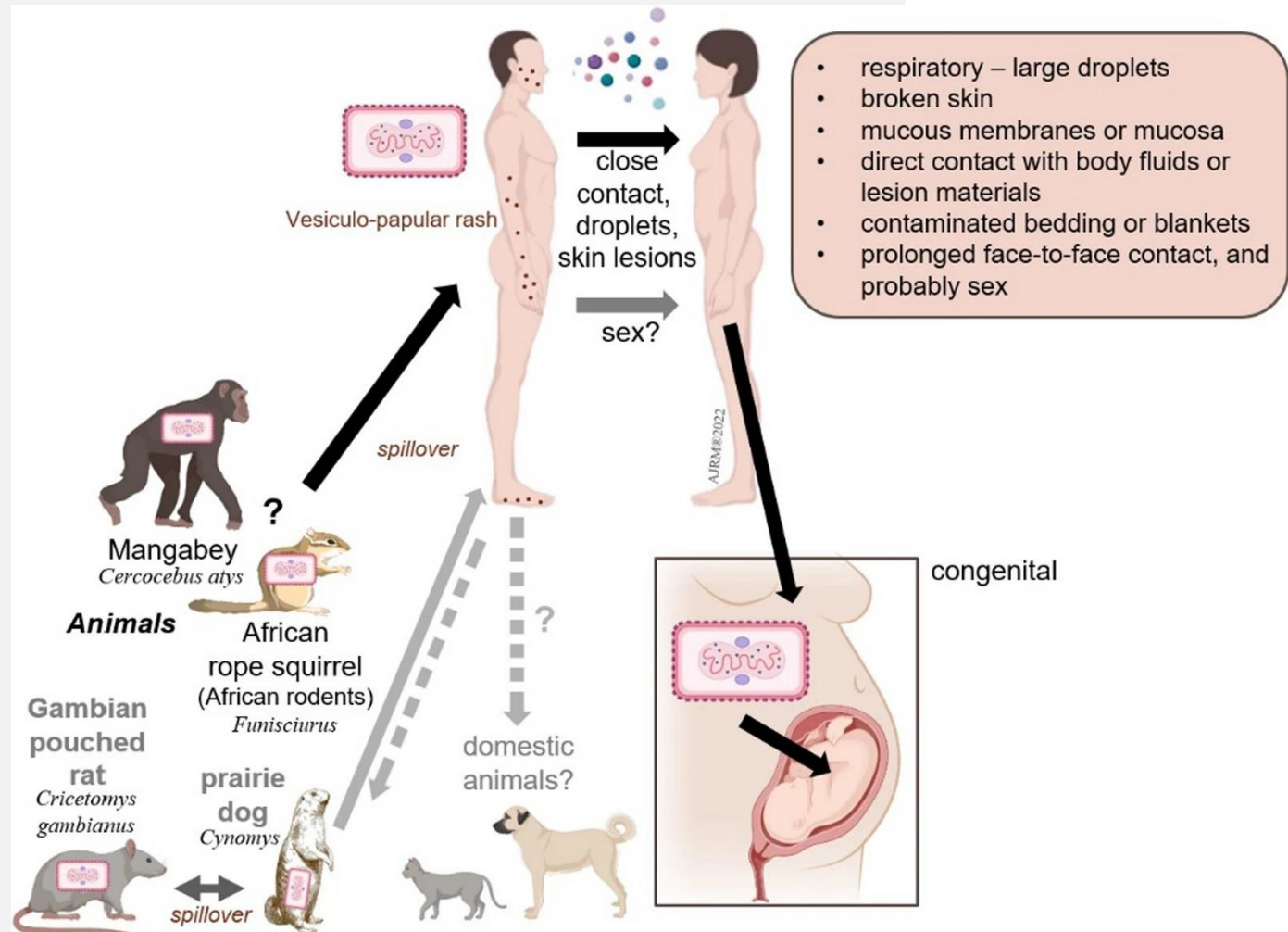
EPIDEMIOLOGY

- Variola Virus, Genus *Orthopoxvirus*
 - Smallpox
 - Cowpox
 - Monkeypox
 - West African clade
 - Congo Basin clade
- Endemic to tropical forested regions of West and Central Africa
 - 2003 human outbreak in US imported from rodents
 - 2018 UK & Israel imported cases from travelers returning from Nigeria
 - 2022 ‘evolving health threat’, cases in multiple non-endemic countries



TRANSMISSION

- Zoonotic transmission (rodents & primates)
 - Handling infected meat, scratches or bites
- Human-human spread
 - Direct contact with infectious rash, scabs, bodily fluids
 - Respiratory secretions (prolonged face to face or intimate contact)
 - Touching contaminated items (clothing or linens)
 - Pregnant mothers can spread to fetus



From: [Monkeypox outbreaks during COVID-19 pandemic: are we looking at an independent phenomenon or an overlapping pandemic?](#)

CLINICAL PRESENTATION



A. Early vesicle, 3mm diameter



B. Small pustule, 2mm diameter



C. Umbilicated pustule, 3-4mm diameter



D. Ulcerated lesion, 5mm diameter



E. Crusting of mature lesions



F. Partially removed scab

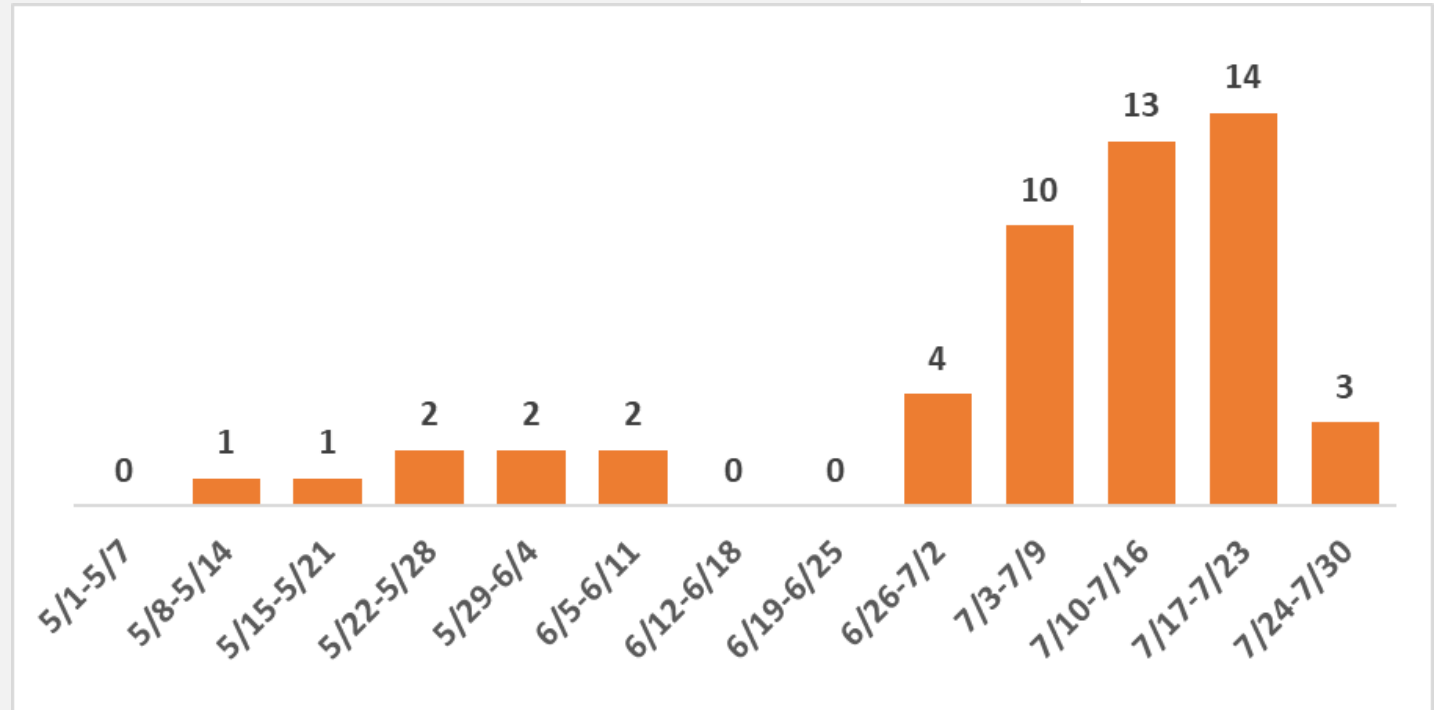
All of the above images are from [GOV.UK](https://www.gov.uk/guidance/monkeypox), <https://www.gov.uk/guidance/monkeypox>

SACRAMENTO COUNTY CASES

- 52 cases with positive laboratory results reported as of Monday 8/1/2022

Select Case Demographics

Hispanic	19 (36.5%)
White, NH	14 (26.9%)
Age younger than 30	13 (25.0%)
Age 30-39	22 (42.3%)
Age 40-49	8 (15.4%)
Age 50 and older	9 (17.3%)



Epidemic curve of 2022 Sacramento County Monkey Pox Cases by Week

LAB TESTING

- Diagnosis confirmed by testing a lesion for the virus's DNA
- Initial testing (Orthopox)
 - SCPHL testing in-house
 - providers need prior approval to submit specimens
 - State VRDL
 - Commercial lab testing became available in July
 - E.g., LabCorp, Aegis & Quest, Mayo Clinic, etc.
- Confirmatory testing (Monkeypox-specific)
 - CDC lab

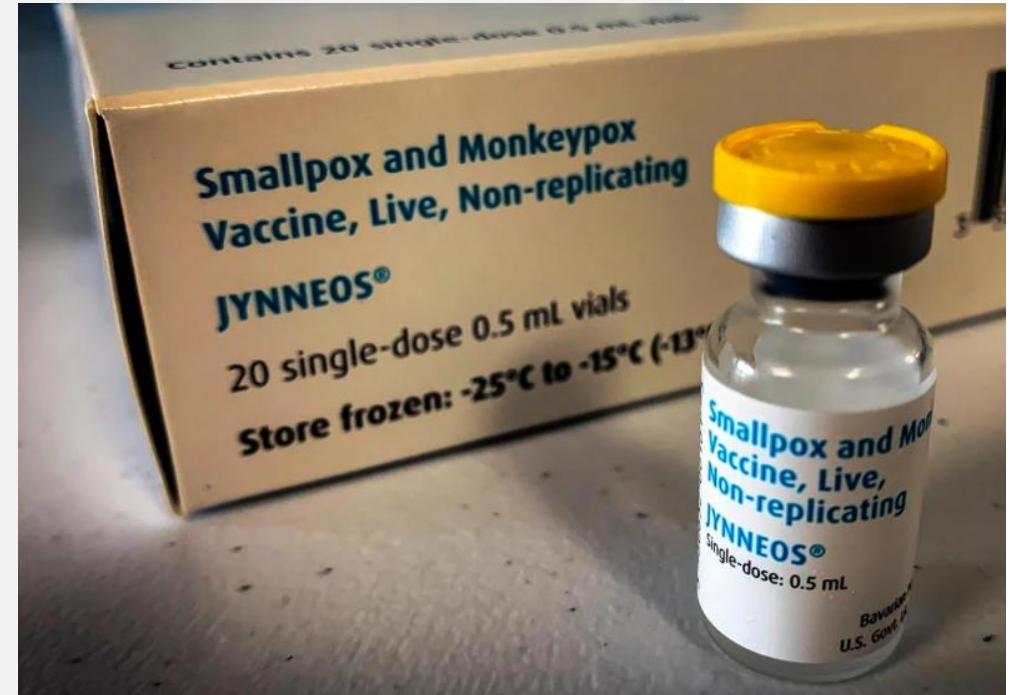
Released to date (8/2/22): 133

- In-County - 118
- Out-of-County - 15



VACCINES

- Approved vaccines
 - Traditional smallpox vaccine (Acam 2000):
 - JYENNEOS – using exclusively
- Supply
 - Still limited, but production ramping up
 - Phase 3 of federal distribution of JYENNEOS this week
 - LHJs request resources/allocation through formal process



VACCINES CONT.

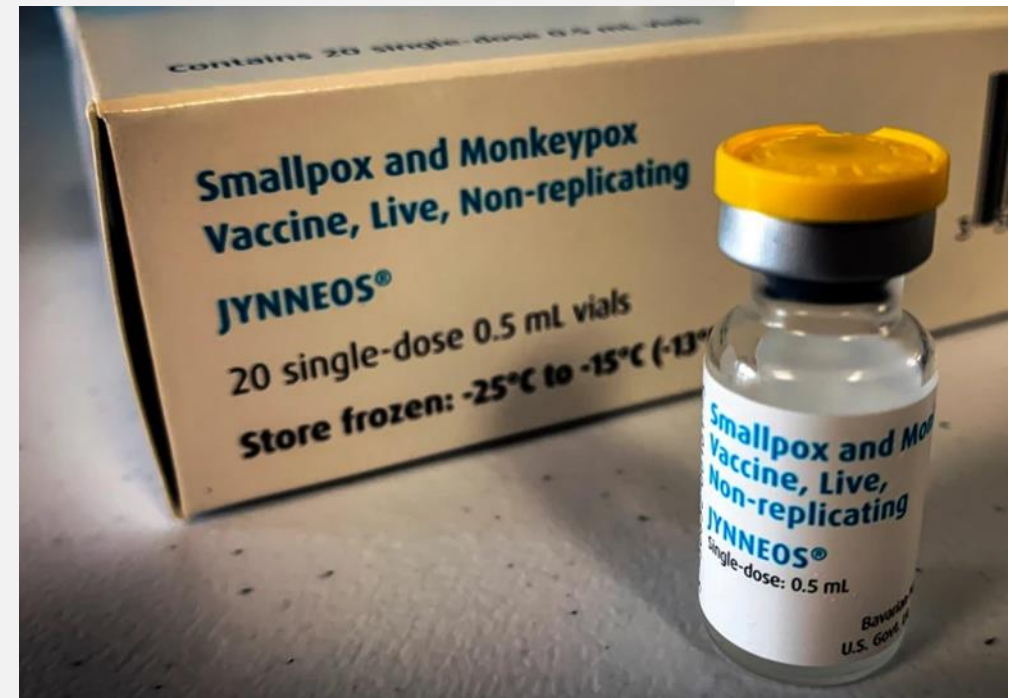
Doses Allocated to Sacramento County to Date	Doses Received by Sacramento County to Date	Doses Administered by SCPH	Doses Redistributed to Area Medical Providers
4,728	3,198 (expect 1,530 later this week)	954	2,205

- Eligibility

- Post-exposure vaccination: Close contacts to case during infectious period
- Pre-exposure vaccination:

Men who have sex with men and/or Transgender individuals who meet at least one of the following criteria:

- have tested positive for an STI in the past two months
- had 2+ sexual partners in the last 3 weeks
- attended or work at a commercial sex venue in the last 3 weeks
- had anonymous sex in past 3 weeks
- engaged in transactional sex (sex work) in past 3 weeks



TREATMENT

- Tecovirimat Monohydrate (TPOXX)
 - Not a lot known previously about using this TPOXX for monkey pox, under an Investigational New Drug (IND) application.
- Aims of treatment
 - Reduce infectious period
 - Reduce complications
- Providers
 - UC Davis (taking most referrals)
 - Kaiser
 - Sutter coming on board soon
 - Conducting outreach/technical assistance for other interested providers

34 patients enrolled for treatment to date

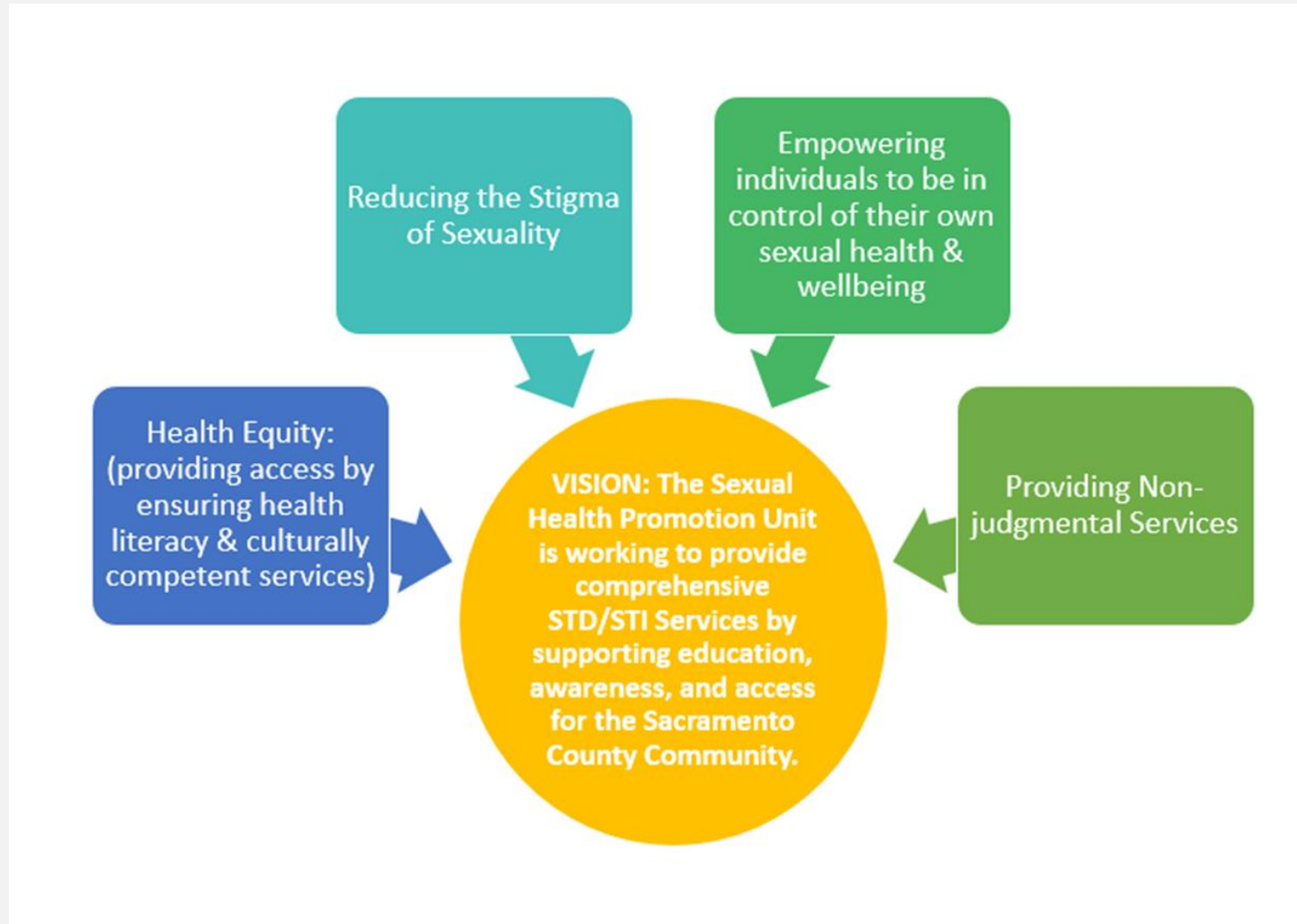
- More referred
- 11 out-of-county



COMMUNITY ENGAGEMENT, COLLABORATION & OUTREACH



THE SEXUAL HEALTH PROMOTION UNIT



GETTING THE WORD OUT

Media & Marketing Response

- SCPH Sexual Health Promotion Staff developed messaging with Community Agencies who serve MSM and Trans communities
- Included our HIV/STI/HCV testing partners in our process from the beginning
- Leveraged community agencies to assist with dissemination of materials



SACRAMENTO COUNTY



Promote • Prevent • Protect

MONKEYPOX VACCINE INFORMATION



WHILE SOME INDIVIDUALS MAY BE AT INCREASED RISK OF DEVELOPING MONKEYPOX, ANYONE CAN GET MONKEYPOX.

What is Monkeypox?

Monkeypox is a rare illness caused by a virus that is related to the smallpox virus. While generally less severe and much less infectious than smallpox, monkeypox can be a serious illness. It causes fever, headache, muscle aches, backache, swollen lymph nodes, a general feeling of discomfort, exhaustion, and severe rash. The illness lasts 2-4 weeks.

How does it spread?

The virus is not easily spread between people, but it can spread through contact with bodily fluids as well as through large respiratory droplets that do not travel more than a few feet.

Why is it recommended?

Vaccines can be used to help prevent symptoms when given before exposure for those that qualify and/or who may be at higher risk.

Who should get vaccinated?

Men who have sex with men and/or transgender individuals who meet at least one of the following criteria:

- have tested positive for an STI in the past two months
- had 2+ sexual partners in the last 3 weeks
- attended or worked at a commercial sex venue in the last 3 weeks
- had anonymous sex in past 3 weeks
- engaged in transactional sex (sex work) in the past 3 weeks

For more information, visit www.cdc.gov/monkeypox



MORE INFO

What vaccine is used?

JYNNEOS is a vaccine indicated for prevention of monkeypox disease. It is administered as two subcutaneous injections four weeks apart. People who receive JYNNEOS are not considered vaccinated until 2 weeks after they receive the second dose of the vaccine.

Is the vaccine effective?

Smallpox and monkeypox vaccines are effective at protecting people against monkeypox when given before exposure to monkeypox. Experts also believe that vaccination after a monkeypox exposure may help prevent the disease or make it less severe.

Will I have side effects?

Most people who get the monkeypox vaccine have only minor reactions, like mild fever, tiredness, swollen glands, and redness and itching at the place where the vaccine is given.



know your health.

know monkeypox.

SACRAMENTO COUNTY



Promote • Prevent • Protect

MONKEYPOX

Monkeypox is a rare viral infection including kissing, sex, and other intimate contact. Symptoms include fever, body aches, swollen lymph nodes, & exhaustion. Although there has been a small number of monkeypox cases in the United States, knowing your risk is important.



MORE INFO

ANYONE CAN GET MONKEYPOX.



WHAT YOU CAN DO

STAY INFORMED

Remain calm. This is a rapidly changing situation. Visit the CDC's website for the latest guidance.

CONTACT

If you have symptoms or feel sick, call (do not visit) your health care provider, and ask about testing.

ISOLATE

If you have symptoms, stay at home, wear a mask, and cover lesions to protect others.



For general information, call Sacramento County Public Health at 916-875-5881 during regular business hours.

What you need to know about Monkeypox

What is Monkeypox?

Monkeypox is a viral infection transmitted through close personal contact, including kissing, sex, and other skin-to-skin contact.



What are the Symptoms?

RASH, BUMPS, or BLISTERS
 These may appear anywhere on the body, including the genitals. This may look similar to syphilis, herpes, or other common skin rashes.



FEVER & HEADACHES

MUSCLE ACHES

SWOLLEN LYMPH NODES



Symptom onset ranges from 5-21 days



ANYONE CAN GET MONKEYPOX
 Blaming gay, bisexual, and/or other groups of people is harmful and unproductive

What you can do

Get tested if you have symptoms, get vaccinated if you are eligible. For more info



SCAN ME



If you have symptoms, stay at home, wear a mask, and cover rash, bumps, or blisters to protect others.



know your health.



know monkeypox.

MONKEYPOX

Monkeypox is a rare viral infection spread through close personal contact, including kissing, sex, and other skin-to-skin contact. Symptoms can include fever, body aches, swollen lymph nodes, skin rashes or lesions, chills & exhaustion. Although there has been a small number of monkeypox cases in the United States, knowing your risk is important.



MORE INFO

ANYONE CAN GET MONKEYPOX.



WHAT YOU CAN DO

STAY INFORMED

Remain calm. This is a rapidly changing situation. Visit the CDC's website for the latest guidance.

CONTACT

If you have symptoms or feel sick, call (do not visit) your health care provider, and ask about testing.

ISOLATE

If you have symptoms, stay at home, wear a mask, and cover lesions to protect others.



For general information, call Sacramento County Public Health at 916-875-5881 during regular business hours.

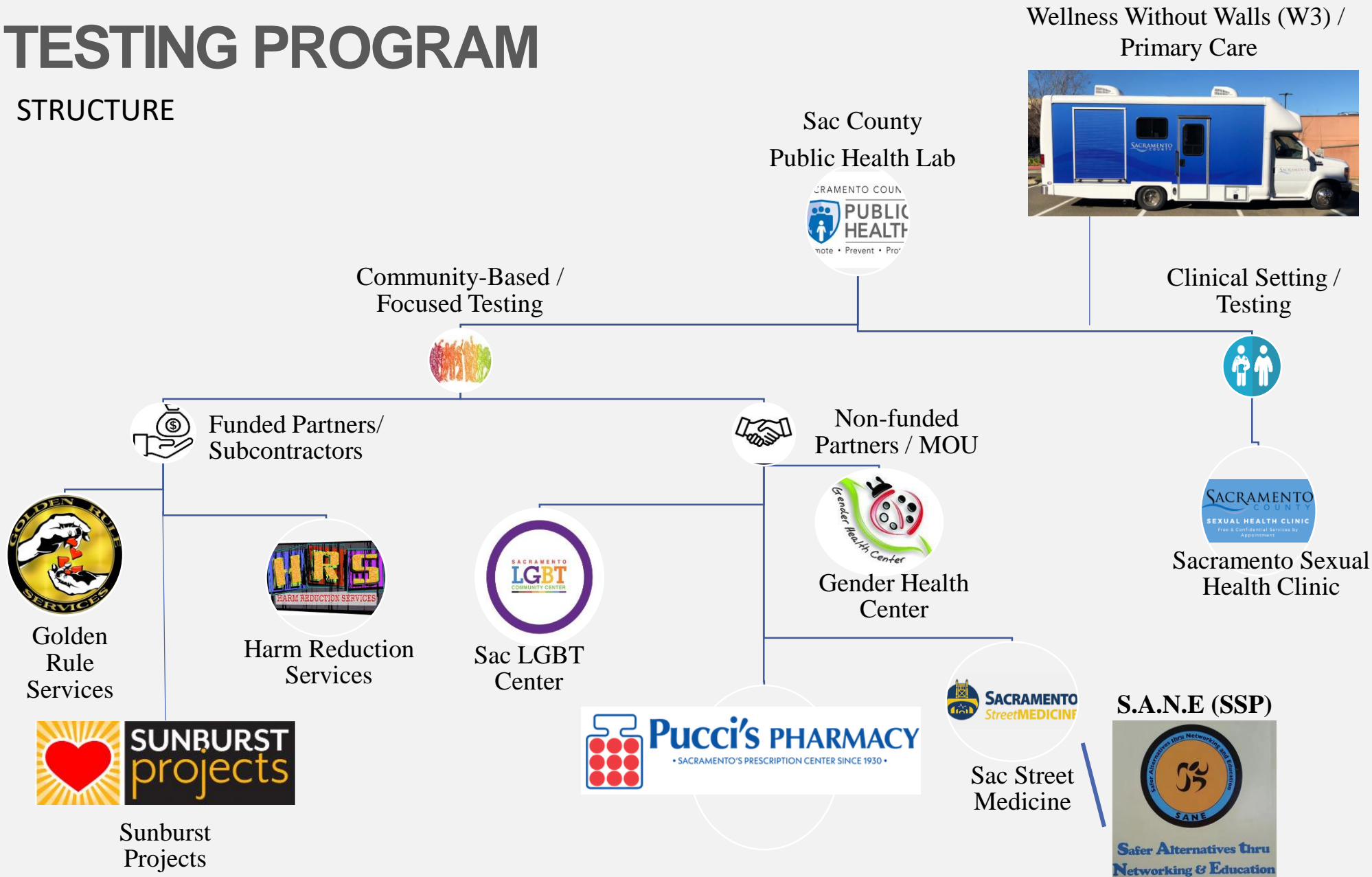
COMMUNITY BASED VACCINATION EFFORTS

- SCPH, Sexual Health Promotion Unit has a strong relationship with key community agencies who serve the residents of Sacramento County



TESTING PROGRAM

STRUCTURE



COMMUNITY BASED PARTNERS



Golden Rule Services
4433 Florin Rd., Ste. 860
Sacramento CA 95823
916-427-4653

- <https://www.goldenruleservicesacramento.org/>

Golden Rule Services (GRS) was founded in January 2000 by Clarmundo Sullivan in response to a gap in local culturally competent services provided to People of Color communities in Sacramento County, and to resolve disproportionate health, education, employment and criminal justice disparities experienced within those communities.

Priority Population for Sacramento County Testing Program:

- African American/Black and Latinx MSM
- Low Income Communities

Services Offered:

- Rapid HIV/HCV testing
- Multi-site GC/CT testing
- Navigation Services
- Ryan White Non-Medical Case Management
- Condoms & Lube



COMMUNITY BASED PARTNERS

<https://sunburstprojects.org/>



OUR MISSION STATEMENT

Sunburst Projects promotes health, wellness and social justice through services that strengthen and empower individuals, families, and communities to ensure those living with HIV/AIDS reach their highest potential.

Sunburst has been a long-time Ryan White Care Provider for Sacramento County and recently branched out to Prevention services

Priority Population for Sacramento County Testing Program:

- Partners of PLWH
- Youth

Services Offered:

- Ryan White: Healthcare coordination and access; treatment adherence counseling; Benefits counseling; 340b Pharmacy Program

*Coming soon:

- Rapid HIV/HCV testing
- Multi-site GC/CT testing



COMMUNITY BASED PARTNERS



Our Mission

The Sacramento LGBT Community Center works to create a region where LGBTQ+ people thrive. We support the health and wellness of the most marginalized, advocate for equality and justice, and work to build a culturally rich LGBTQ+ community.

<https://saccenter.org/>

Priority Population for Sacramento County Testing Program:

- LGBT Communities
- Youth 13-24

Services Offered:

- Rapid HIV/HCV testing
- Multi-site GC/CT testing
- PrEP Navigation Services
- Condoms, Lube
- Sexual Health Education
- HIV Support Groups (Virtual)
- Respite for Queer Youth (Q-Spot) ages 13-24



COMMUNITY BASED PARTNERS



Our philosophy has always been to place great emphasis on individualized and personal care. Each patient deserves the greatest level of respect, care and attention, and it is our goal to consistently be there for our patients. We take great pride in getting to know each patient on a personal basis, understanding their health concerns and needs, and providing them with the necessary knowledge and information to help them enjoy long, healthy and fulfilling lives.

Our team does more than you fill your medication, at Pucci's we provide services and products to our patients in a manner that maximizes our patients health and communities welfare.

Services Offered:

- Delivery Services
- 24/7 Refill
- Compounding
- Immunizations (Routine and Travel)
- Vitamins & Supplements
- Pill Packaging
- Medication Synchronization



COVID UPDATES

[Sacramento County Public Health COVID-19 Dashboards](#)

	Total	Additional	7 Day* Average	7 Day* Average - Unadjusted Rate (per 100,000)
Cases	329,723	4,101	478 ↓	30.7 ↓
Deaths	3,324	15		

*Cases include a 3-day lag. Deaths include a 14-day lag.

State data (CDPH): <https://covid19.ca.gov/state-dashboard/>

- Vaccine dashboard: <https://covid19.ca.gov/vaccines/#California-vaccines-dashboard>

National Data (CDC): https://covid.cdc.gov/covid-data-tracker/#trends_dailytrendscases



THANK YOU

Please contact Lynnann Svensson, SvenssonL@SacCounty.net with any questions

SACRAMENTO COUNTY



**PUBLIC
HEALTH**

Promote • Prevent • Protect

