

---

# SACRAMENTO COUNTY HEALTH CENTER

---



---

# ABOUT US

- **Vision:** To be an exceptional health care center valued by the communities we serve and our team.
- **Mission:** To provide high quality, patient-focused, equitable healthcare for the underserved in
- Sacramento County, while providing training for the next generation of local healthcare providers.



DEPARTMENT OF HEALTH SERVICES

*Sacramento County Health Center*

---





DEPARTMENT OF HEALTH SERVICES  
*Sacramento County Health Center*

### Vision

To be an exceptional health care center valued by the communities we serve and our team.

### Values

Accountability	Excellence
Compassion	Education
Diversity	Respect
Equity	

### Mission

To provide high-quality, patient-focused, equitable healthcare for the underserved in Sacramento County, while providing training for the next generation of local healthcare providers.



## ABOUT US

The Sacramento County Health Center is a Federally Qualified Health Center that provides primary care and behavioral health services to low-income residents of Sacramento County.



---

**FQHC:** FQHCS ARE DESIGNED TO PROVIDE PRIMARY CARE SERVICES IN MEDICALLY UNDERSERVED AREAS OR TO POPULATIONS THAT FACE BARRIERS TO ACCESSING HEALTHCARE. THEY QUALIFY FOR FEDERAL FUNDING UNDER SECTION 330 OF THE PUBLIC HEALTH SERVICE ACT AND MUST MEET SPECIFIC CRITERIA, INCLUDING OFFERING A SLIDING FEE SCALE BASED ON INCOME AND HAVING A GOVERNING BOARD OF DIRECTORS THAT INCLUDES PATIENTS.

---

# THE POWER OF COMPASSION

In a medical setting, kindness is not a soft skill—it's a clinical necessity. Patients are often at their most vulnerable. A compassionate interaction can ease anxiety, build trust, and even improve health outcomes.

- Emotional Well-being:** A simple smile, a moment of listening, and kindness can significantly reduce a patient's stress and fear.
- Trust and Compliance:** When patients feel respected and cared for, they are more likely to trust their care team and follow treatment plans.
- Reputation:** Positive patient experiences are a powerful force, leading to word-of-mouth referrals and a stronger reputation for our organization.





Sacramento County Leadership  
Department of Health Services



Primary Health



Co-Applicant Board  
consisting of 51%  
patients and 49%  
community members



Chief Medical Officer



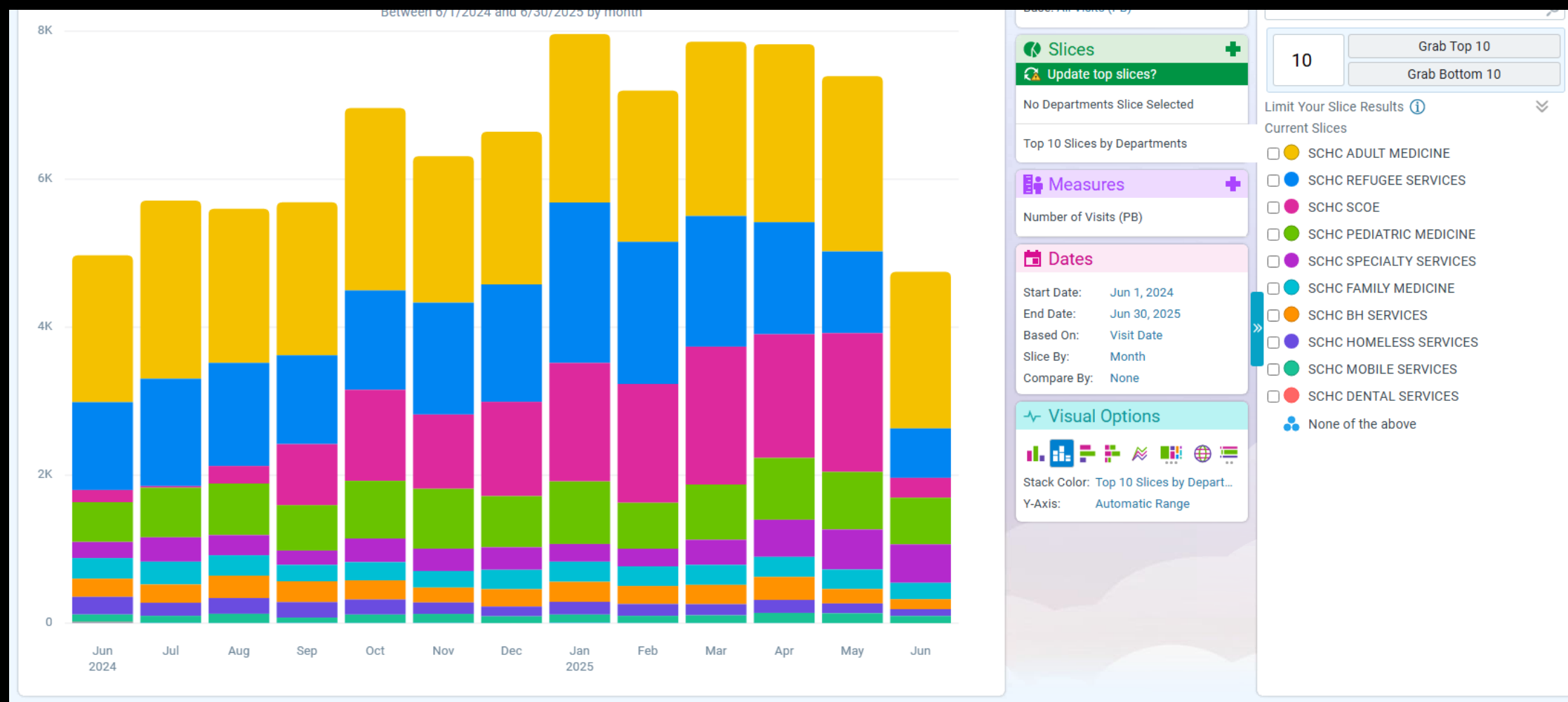
---

## Current Programs Include:

- Adult Medicine
  - Pediatrics
  - Family Medicine
  - Refugee Health Clinic
  - Circle Clinic
  - Radiology
  - Integrated Behavioral Health
  - Loaves and Fishes
  - Mobile Medicine
  - School-Based Health Centers
-



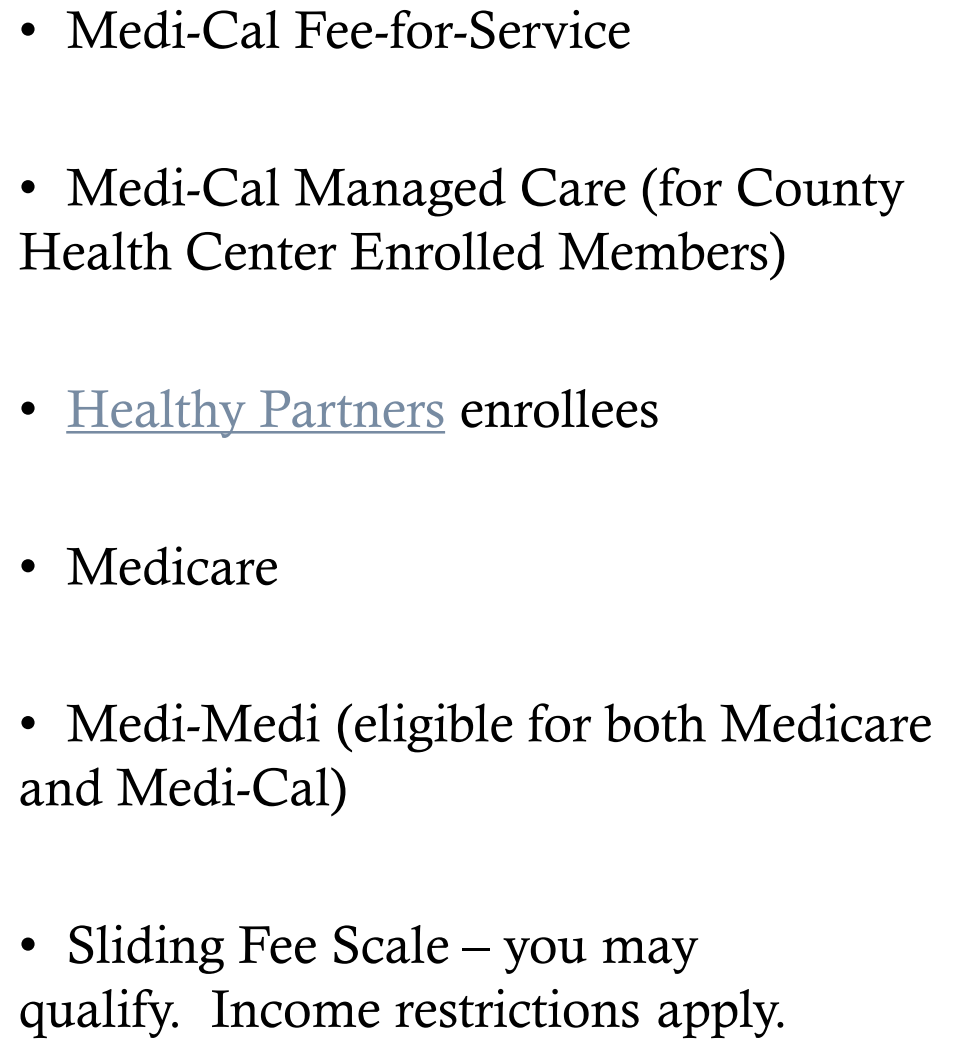




# SERVICES



- 
- Adult Primary Care
  - Family Medicine, Obstetrics & Gynecology
  - Pediatric Primary Care
  - Preventive Health Care
  - Psychiatry & Mental Health Counseling (Mild to Moderate for Internal Patients)
  - Specialty Care (limited to Cardiology and Musculoskeletal)
  - Chronic Disease Management
  - Communicable Disease Screening
  - On-Site Laboratory and Radiology
  - Assistance with Obtaining Health Care Coverage
-







---

# SCHC'S UNIQUE CHARACTERISTICS

- Extremely Diverse Staff and Patient Population
- Academically Informed Health Center
- Focus on Homeless
  - Brick & Mortar Site
  - Outreach - Mobile and Street Medicine
- Public Entity FQHC –
  - Refugee Program
  - Foster Care/ Circle Clinic Program
  - School-Based Mental Health



---

# 2024-2026: STRATEGIC PLAN

- **Priority 1: Increase Access to Care**
    - **Goal 1:** Increase Access to Health Care Services
    - **Goal 2:** Increase Access to Enabling and Navigation Services to
    - Overcome Social Determinants of Health
  - **Priority 2: Promote Economic Sustainability**
    - **Goal 1:** Increase Efficiency Through Activities Including Process Improvements, Staff Training, Enhanced and/or Updated Technologies
    - **Goal 2:** Improve Staff Retention to Lower Costs due to Recruitment and new Employee Training Costs and Other Costs
    - **Goal 3:** Identify and Track Funding Opportunities (e.g., CalAim) That Align With the Health Center's Mission, Vision, and Values
- 



---

# HEALTH CENTER SCHOOL SITES

SCHC has contracted with SCOE to provide services specific to behavioral health at the School-Based Health Center Sites. Since these are FQHC sites, we have some specific requirements that are not typically done in other behavioral health centers. These requirements include compliant signs and posting, hours of operation, and ensuring that clients receive specific services.



---

# WELLNESS WITHOUT WALLS

Wellness Without Walls (W3), a funded partnership with Primary Health and Public Health, is a mobile unit delivering clinical services – including HIV, sexual health, and broader services – and referrals to unhoused communities and transitional aged youth. This mobile clinic aims to increase access to health services, information, and resources among marginalized communities in Sacramento County. This program is made possible with funding from the Health Resources and Services Administration (HRSA), and the Centers for Disease Control and Prevention.

---



---

SACRAMENTO COUNTY'S MOBILE CLINIC IS DOING MORE THAN JUST ROLLING INTO NEIGHBORHOODS, IT'S ROLLING OUT A WHOLE NEW LEVEL OF CARE. [WELLNESS WITHOUT WALLS \(W3\)](#), THE COUNTY'S MOBILE HEALTH PROGRAM, HAS ADDED [BEHAVIORAL HEALTH SERVICES' HOMELESS ENGAGEMENT AND RESPONSE TEAM \(HEART\)](#) TO ITS NETWORK, BRINGING MENTAL HEALTH AND SUBSTANCE USE SERVICES DIRECTLY TO PEOPLE EXPERIENCING HOMELESSNESS OR HOUSING INSTABILITY. THIS EXPANSION IS HELPING W3 DELIVER WHOLE-PERSON CARE ALL IN ONE STOP.

---





# QUALITY IMPROVEMENT PLAN

---



---

# GROWTH OVER THE LAST FEW YEARS

New programs  
since 2020

Foster care  
(Circle Clinic) –  
2020

Preventive dental  
(pediatrics) -  
2020

Mental health in  
schools – 2020

Complex Care  
Coordination –  
2020/21

Mobile Van -  
2022

Street  
Medicine -  
2023





# Looking Ahead

Efficiency

Continued  
Quality

Expanding  
Access

Continued  
Community  
Partnership

\*Fiscally Self-Sustaining   \*Quality Care  
\*Accountability, Clarity, and Efficiency

---

# THANK YOU

- Michelle Ellen Besse, DHA, LMFT 47914
- [bessem@saccounty.gov](mailto:bessem@saccounty.gov)
- Interim Division Manager
- Division of Primary Health



DEPARTMENT OF HEALTH SERVICES

*Sacramento County Health Center*

---