

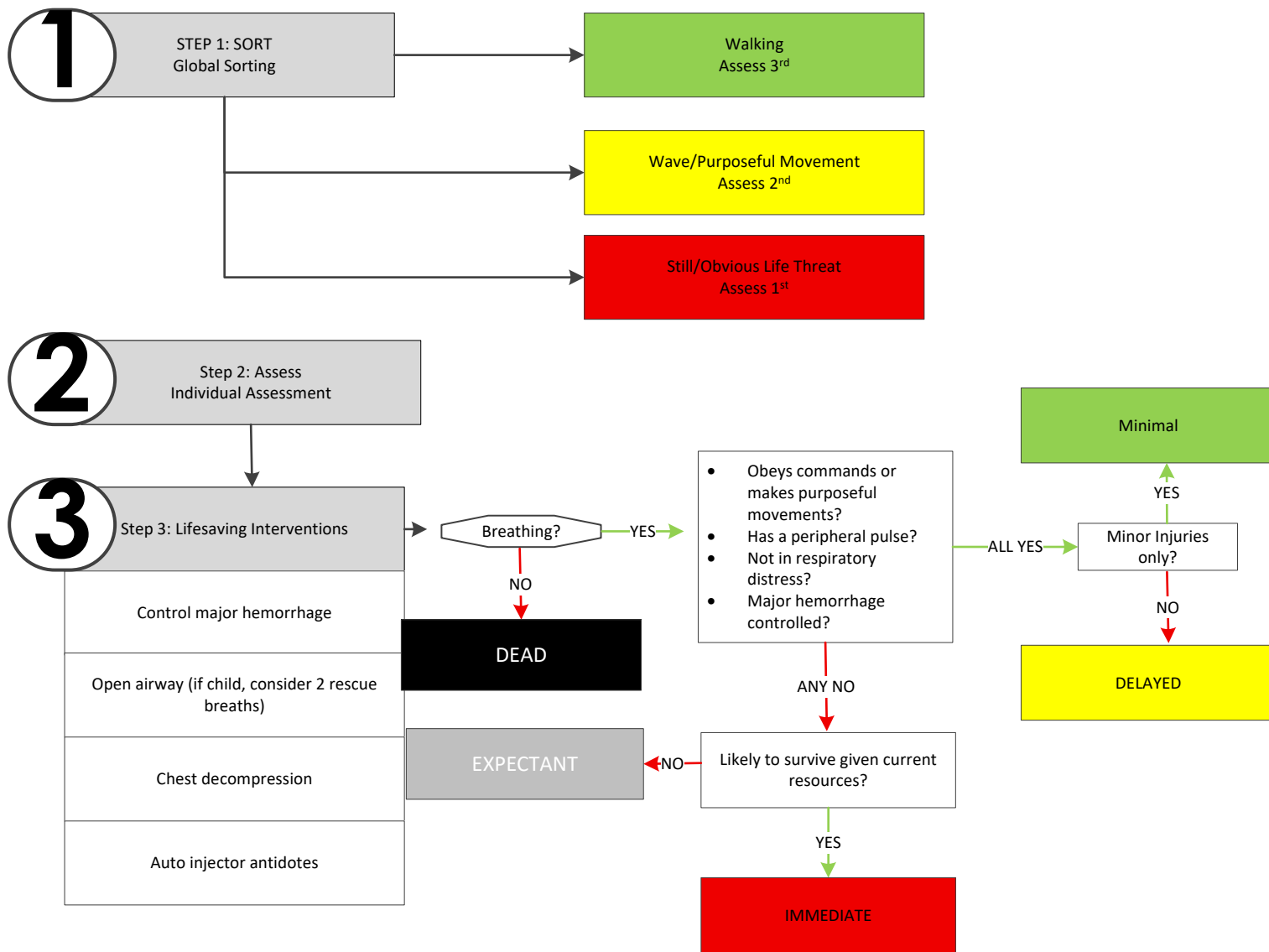


SALT

EMS Medical Director:
[Signature on File](#)
 EMS Administrator:
[Signature on File](#)

(Sort, Assess, Lifesaving Interventions, Triage/Treatment)

ACTIVATION



Adult Medical Treatment Guidelines



Treatment Protocol 7508



SALT

(Sort, Assess, Lifesaving Interventions, Triage/Treatment)

A. Initiate SALT Triage – Preferred

1. Sort – Perform global assorting
2. Assess – Perform individual assessment
3. Life Saving Interventions
4. Treatment and Transport

B. Categorize Patients

1. **Immediate (Red)**: Unable to follow commands or make purposeful movements, OR they do not have a peripheral pulse, OR they are in obvious respiratory distress, OR they have a life-threatening external hemorrhage; provided their injuries are likely to be survivable given available resources.
2. **Delayed (Yellow)**: Able to follow commands or make purposeful movements, AND they have peripheral pulse, AND they are not in respiratory distress, AND they do not have a life-threatening external hemorrhage, AND they have injuries that are not considered minor.
3. **Minimal (Green)**: Able to follow commands or make purposeful movements, AND they have peripheral pulse, AND they are not in respiratory distress, AND they do not have a life-threatening external hemorrhage, AND their injuries are considered minor.
4. **Expectant (Gray)**: unable to follow commands or make purposeful movements OR they do not have a peripheral pulse, OR they are in obvious respiratory distress, OR they have a life-threatening external hemorrhage, AND they are unlikely to survive given the available resources. These patients should receive resuscitation or comfort care when sufficient resources are available.
5. **Dead (Black)**: No spontaneous breathing after establishing a basic airway (and 2 ventilations in a child). Patients triaged as Dead should be reassessed after initial triage to confirm no signs of life.

