



# MHSA Steering Committee Innovation Component

**SURVEY RESULTS and NEXT STEPS**

**April 20, 2023**

# RECAP: Timeline

- ▶ **October 2022** - MHSA Steering Committee (SC) INN Component Requirements, as specified in the Welfare and Institution Codes (WIC) and California Code of Regulations (CCR), presentation
- ▶ **November 2022** - At the request of the SC Executive Committee, re-reviewed INN Component Requirements
- ▶ **November 2022** - INN Survey launched to obtain input from community members to inform the next INN project; received 85 responses
- ▶ **January 2023** - INN Component refresher presentation; reviewed the INN survey responses
- ▶ **January 2023** - SC Executive Committee requested to have the survey revised and disseminated broadly once again to gather more community members feedback; 400+ responses combined

# Recap: INN Requirements

- ▶ Must *contribute to learning* rather than focusing on providing services.
- ▶ *Time-limited*; not more than 5 years. Time frame is based on complexity of the approach and evaluation of the approach.
- ▶ Must align with the *MHSA General Standards*.
- ▶ After Board of Supervisors approval, must obtain *MHSOAC approval* before implementation.
- ▶ If successful, County may continue the project services but must transition it to another MHSA funding category or another fund source.

# Recap: INN Component Requirements

All Innovative Projects must support innovative approaches by doing one of the following:

- Introduce a new mental health practices or approaches, including but, not limited to, prevention and early intervention.
- Make a change to an existing practice or approach, including, but not limited to adaptation for a new setting or community.
- Introduce a new application to the mental health system of a promising community-driven practice or an approach that has been successful in non-mental health contexts or settings.
- Participates in a housing program designed to stabilize a person's living situation while also providing supportive services on site.

# INN Component Requirements (Cont.)

The Innovative Projects are required to have a primary purpose:

- To increase access to underserved groups.
- To increase the quality of services, including better outcomes.
- To promote interagency collaboration.
- To increase access to services, including, but not limited to, services provided through permanent supportive housing.

(WIC 5830)

# INN Component Requirements (Cont.)

INN Projects must come through a Community Planning Process (CPP) and align with the MHPA General Standards:

- ▶ Community Collaboration
- ▶ Cultural Competence
- ▶ Client Driven
- ▶ Family Driven
- ▶ Wellness, Recovery and Resilience Focus
- ▶ Integrated Service Experience

# INN Component Requirements (Cont.)

INN Projects may affect any aspect of mental health practice or assess a new or changed application of a promising approach to solving persistent mental health challenges, including but not limited to:

- ▶ Administrative, governance, and organizational practices, processes, or procedures
- ▶ Advocacy (i.e. client and/or family advocacy)
- ▶ Education and training for service providers, including nontraditional mental health practitioners
- ▶ Outreach, capacity building, and community development
- ▶ System development
- ▶ Public education efforts
- ▶ Research
- ▶ Services and interventions, including prevention, early intervention, and treatment
- ▶ Permanent supportive housing development

# Recap: Sacramento County INN Projects to Date

## Respite Partnership Collaborative – 2011-2016

**\*Services and interventions, including prevention, early intervention, and treatment | Outreach, capacity building, and community development**

- ✓ Innovative Approach - introduced a new application
  - Community driven collaborative to develop and support a continuum of respite services and supports
- ✓ Primary Purpose: Increase quality of services, Promote interagency collaboration,
- ✓ Project services are being sustained through CSS and PEI component funds

## Behavioral Health Crisis Services Collaborative – 2018 – 2023

**\*Services and interventions, including prevention, early intervention, and treatment | Administrative, governance, and organizational practices, processes, or procedures | Advocacy**

- ✓ Innovative Approach – introduced a new approach
  - Public (Sacramento County) and Private (Dignity Health) entities sharing governance and regulatory responsibilities to delivering medical emergency and crisis stabilization care on a hospital emergency dept campus
- ✓ Primary Purpose : Increase quality of services, Increase access to services, Promote interagency collaboration
- ✓ Project services are being supported though non-MHSA sources

## Mental Health Urgent Care Clinic – 2017 – 2022

**\*System development | Outreach, capacity building, and community development | Services and interventions, including prevention, early intervention, and treatment**

- ✓ Innovative Approach – made a change to an existing practice
  - Adapted urgent care medical model to provide crisis response for individuals experiencing a mental health crisis
- ✓ Primary Purpose: Increase quality of services, Increase access to services, Project services are being sustained through CSS component funds

## Forensic Behavioral Health Multi-System Teams / Community Justice Support Program – 2020 – present

**\*Services and interventions, including prevention, early intervention, and treatment**

- ✓ Innovative Approach – makes a change to an existing practice
  - Adapts and expands on the Child and Family Team (CFT), a child welfare model, for the forensic behavioral health population
- ✓ Primary Purpose: Increase access to services, Promote interagency and community collaboration



# January 2023 MHSA Steering Committee Innovation Component Action

- ▶ Amended motion from the January 2023 SC meeting: “Empower the Executive Committee and interested Committee members to consider how to move this conversation forward.”

# INN Survey Results

## 1<sup>st</sup> Round

Participants were asked to choose their **top three** categories of focus for the next INN Project:

1. **Services and interventions – 62%**
2. **Outreach, capacity building and community development – 50%**
3. **Education and training for service providers – including non-traditional practitioners 49%**

\*\*\*\*\*

4. **Advocacy – 42%**

## 2<sup>nd</sup> Round

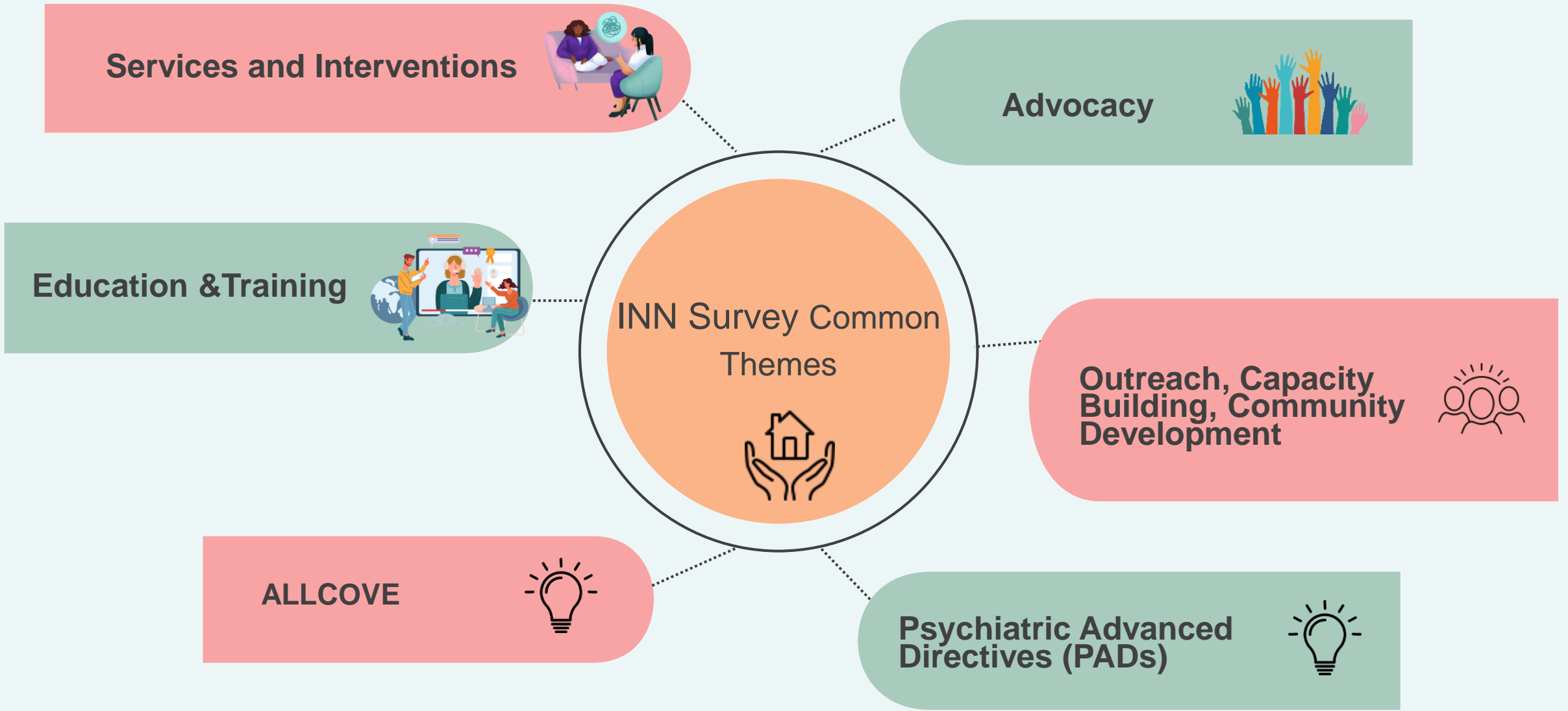
Participants were asked to choose their **top two** categories of focus for the next INN project:

1. **Services and interventions – 46%**
2. **Advocacy – 37%**

\*\*\*\*\*

3. **Education and training for service providers – including non-traditional practitioners 31.49%**

4. **Outreach, capacity building and community development 31.14%**



# INN Recommendation

Participate in two MHSOAC Multi-County Learning Collaborative

1. **ALLCOVE: A One-Stop Shop for Integrated Youth Mental Health Support**
2. **PADs: Psychiatric Advanced Directives**

And

3. **Form a Subcommittee to Determine a Third INN Project**