



## Alcohol & Drug Services

### Sacramento County Mental Health Treatment Center Intake Stabilization Unit (ISU)

Source: Sacramento County Behavioral Health Data System

#### Amphetamine Use Disorder Diagnosis Data

FY 2017-18 and FY 2018-19

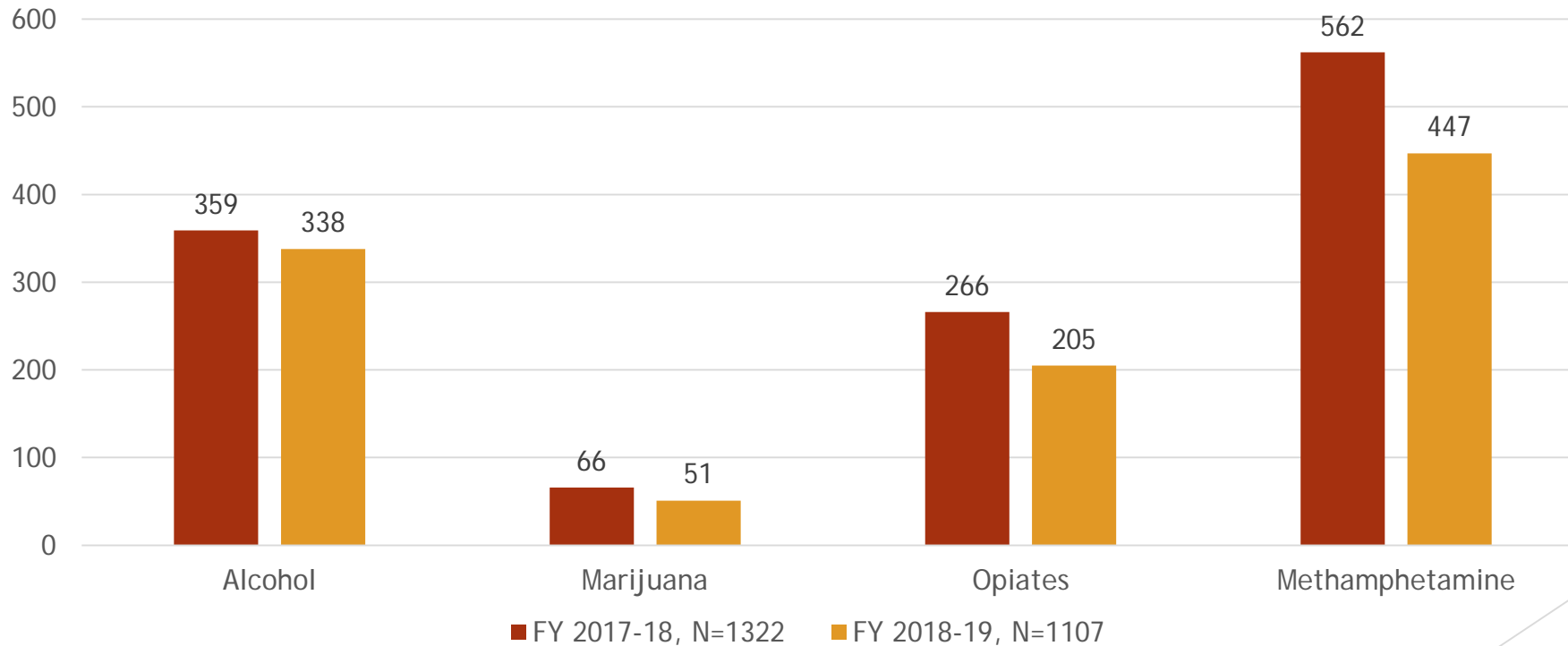
- 443 clients presenting at the ISU were diagnosed with Amphetamine Use Disorder
- 335 of these were unduplicated clients
- 63.2% of unduplicated clients were male
- 36.8% of unduplicated clients were female
- There is a slightly higher readmission rate for males than females

# Alcohol & Drug Services

## Residential Treatment Program Admissions

Source: California Outcomes Measurement System (CalOMS) Treatment Data, Primary Drug of Choice Admissions Data

Primary Drug of Choice

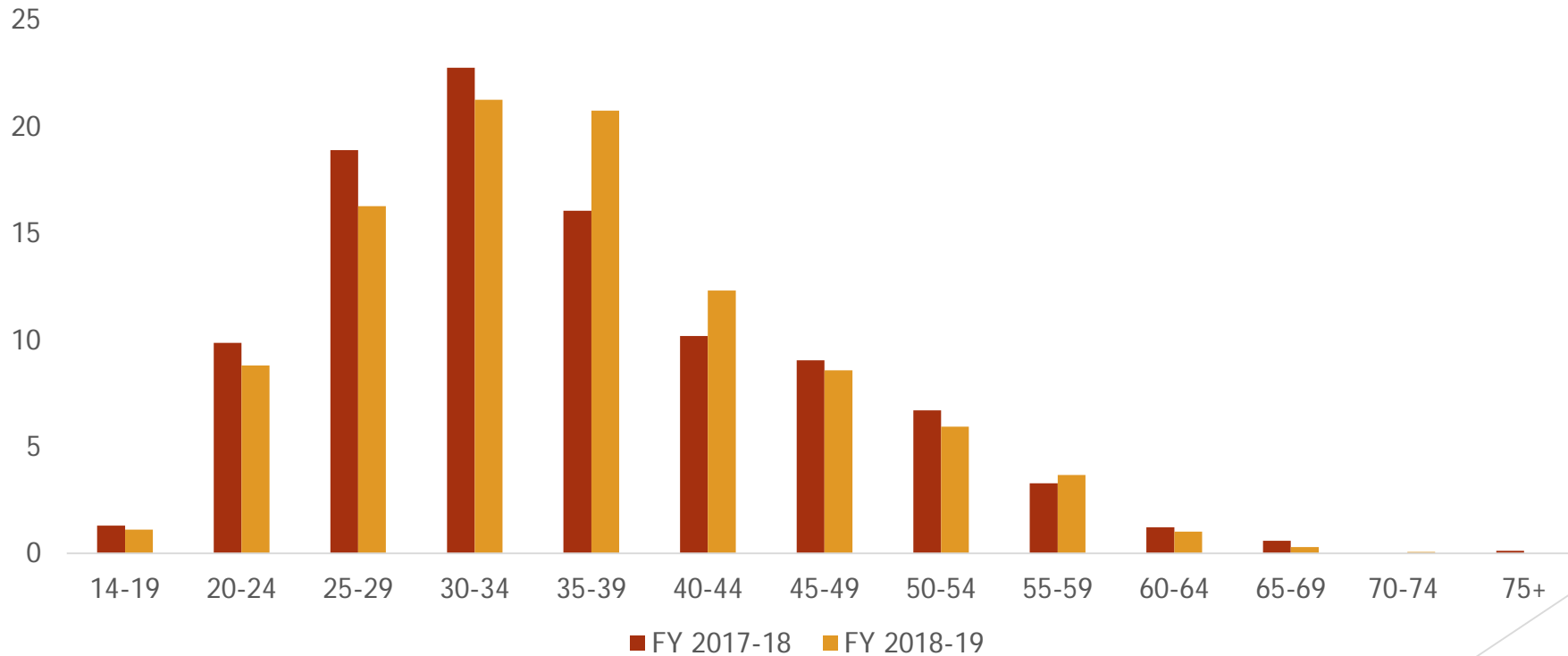


## Alcohol & Drug Services

### Substance Use Disorder Treatment Program Admissions

Source: California Outcomes Measurement System (CalOMS) Treatment Data, Primary Drug of Choice Admission Data

#### Methamphetamine Use by Age



## Alcohol & Drug Services

### Substance Use Disorder Treatment Program Admissions

Source: California Outcomes Measurement System (CalOMS) Treatment Data, Primary Drug of Choice Admission Data

#### Methamphetamine Use by Sex

